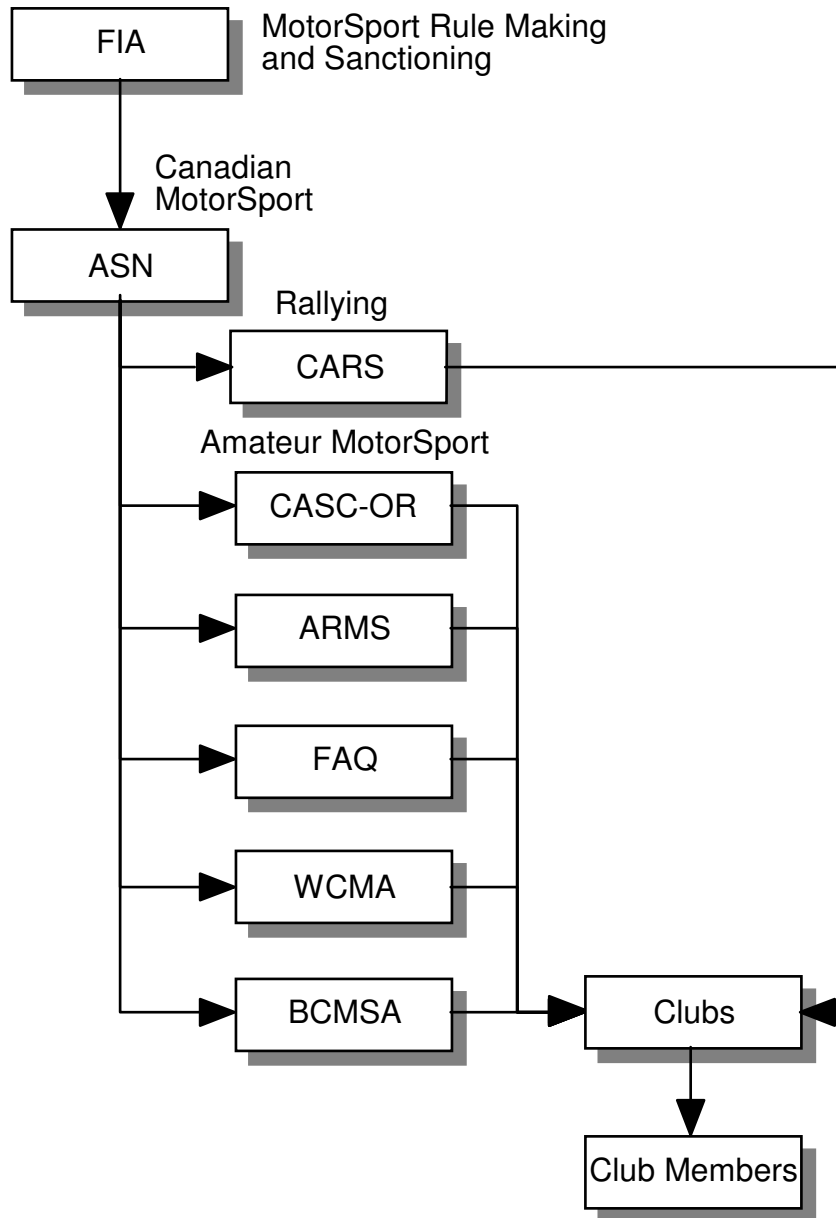


Annex A

The Structure of Rallysport

FIA - Devolution of Authority



The Fédération Internationale de l'Automobile (FIA) in Geneva, Switzerland, is recognised as the governing body for all motoring in the world and separates motoring into Touring and Sporting activities. The FIA delegates authority to countries around the world. There can be two delegates within a country, one for Touring and one for

Sporting. Rallysport, as a specific branch of motorsport, is controlled by a hierarchical structure that flows down from the FIA.

ASN Canada FIA: is recognized by the FIA as the sanctioning body for motorsport (the CAA for touring) in Canada. It exercises the sporting power of the FIA in this country. ASN has delegated most motorsport activity (except international and professional events) to regional organisations or *Territories*, as listed below. These Territories look after amateur motorsport in their respective regions, taking into account local conditions and special needs (see <http://www.fia.com/tourisme/infoclub/canada.htm>):

- Atlantic Region Motor Sports (ARMS) - covering the Atlantic Provinces.
- Fédération Auto Québec (FAQ) - Province of Québec.
- CASC Ontario Region (CASC-OR) - Province of Ontario.
- Western Canada Motorsport Association (WCMA).
- British Columbia Motor Sport Association (BCMSA).

Territories are the *members* of ASN Canada FIA. In turn, the individual affiliated motorsport clubs are members of the Territories in which they are based.

The Board of Directors of ASN Canada FIA presently comprises:

Roger Peart, P.Eng. President

Paul B. Cooke Vice President Competition

Barry H. Morton, C.A. Vice President Administration

Pierre Tourigny, L.L.LL Secretary

Mr. Laurence Polley, P.Eng. Director at Large (also President of CASC – OR)

Terry Epp, B.A., M. Ed. Director at Large (also President of CARS)

The Board of Directors has full executive authority, and meets as required to conduct the affairs of the ASN.

Karting and Rallying are recognized as special interest groups within ASN. Karting is coordinated by the National Karting Sporting Commission, while the interests of Canadian Rallysport competitors are served by a separate ASN-affiliated organisation, the Canadian Association of Rallysport (CARS). CARS co-ordinates national and Regional Rallysport across Canada and promotes the national rally championship (note that the ASN retain some policy making powers over Rallysport, for example, with respect to the potential WRC round in Canada).

CARS is further divided into regional organizations as follows:

- Atlantic Region (AR)
- Rallye Sport Quebec (RSQ)
- Rally Sport Ontario (RSO)
- Rallywest (RW)

- Rally Pacific Motorsports (RPM)

ASN maintains an Advisory Board which includes, in addition to the five Directors (which 5 directors...the Board consists of 6 people...doesn't include the President?), the Presidents of each of the five regional organisations or Territories as listed above, plus representatives of the Rallysport (i.e., the President of CARS?) and karting organisations. The Advisory Board, which has no executive powers, meets at least annually, providing a forum for the exchange of information and ideas between the Territories and the ASN Board of Directors.

While all these bodies are 'not for profit' they incur operating costs that must be matched by incoming revenue. The Territories and CARS obtain revenue from affiliation fees and the issue of licences. If clubs pay affiliation fees to both their CARS and the Territories (e.g., CASC – OR), then Club members have the right to have their views represented to the ASN through both CARS for Rallysport, and through their Territory representatives for all other motorsporting activities.

All international licences, professional racing licenses and national karting licenses are issued directly by ASN Canada FIA (does one have to be a member of an ASN affiliated Club to obtain a pro or national license?). Performance Rally licenses are issued by CARS. All other licenses (including ice racing licenses) are issued by the Territory organizations listed above. To obtain a license from a Territory you must be a member of a club affiliated with that Territory (is this true?).

A Club can be affiliated with the ASN Territory in which it is based by filing documentation, paying a fixed annual affiliation fee, and paying an annual levy per club member (in 2002 this amounts to \$100 fixed and \$15 per member, plus GST). All affiliated Clubs may exercise voting power on Territory matters based on the number of affiliated members in the club.

A Club may be affiliated with CARS in a similar fashion. At the moment due to a revenue sharing agreement between CARS and CASC-OR, a Club that is affiliated with both CASC – OR and CARS pays half of the *per member* levy to each organization (in 2002 it is \$7.50+GST to each). Clubs that have no interests in Rallysport are likely to affiliate only with the ASN Territory in their Province.

Motorsporting Powers

Who holds the power in motorsport in Ontario? Who actually makes the decisions and who gets to influence those decisions? In the following Table the bodies that exercise executive and advisory powers in the motorsporting hierarchy are listed.

Knowing how the sport functions can be helpful when dealing with issues related to affiliation fees, licenses and in the exercise of the Club's powers in influencing the way Rallysport is run and administered.

	Executive Powers	Advisory Powers
	<ul style="list-style-type: none"> • The power to make policy, rules and regulations. • The authority to arbitrate disputes. 	<ul style="list-style-type: none"> • The authority to advise.
FIA	<p><u>World Motorsport Council</u> Elected by the General Assembly of the FIA which is comprised of the Presidents of 163 Clubs, Associations, Federations or other motoring organisations from 119 countries. Each country has one vote.</p>	<p><u>Sporting Commissions</u> Formula One Commission Technical Commission World Rally Championship Rally Commission Cross-Country Rally Commission Circuits Commission Safety Commission Touring Car Commission Electro-Solar and Alternative Energies Commission Off-Road Commission Hill-Climb Commission Historic Motor Sport Commission Truck Racing Commission Records Commission Drag Racing Commission Homologation and Technical Working Group Manufacturers' Commission Medical Commission GT Commission Sportscar Commission Calendar Commission Research Group</p>
ASN	<p><u>Board of Directors</u> President ASN Vice President Competition, ASN Vice President Administration, ASN Secretary, ASN Director at Large, ASN Director at Large, ASN</p>	<p><u>Advisory Board</u> Vice President Competition, ASN Vice President Administration, ASN Secretary, ASN Director at Large, ASN Director at Large, ASN President, CASC – OR President, CARS President, ARMS President, FAQ President, WCMA President, BCMSA</p>

	Executive Powers	Advisory Powers
	<ul style="list-style-type: none"> • The power to make policy, rules and regulations. • The authority to arbitrate disputes. 	<ul style="list-style-type: none"> • The authority to advise.
Territories	<u>Executive (CASC – OR)</u> President, CASC - OR Vice President, CASC - OR Secretary, CASC - OR Treasurer, CASC - OR	<u>Board of Directors (CASC – OR)</u> President, CASC - OR Vice President, CASC – OR Secretary, CASC - OR Treasurer, CASC - OR Race Director, CASC – OR Ice Race Director, CASC – OR Solo I Director, CASC – OR Solo II Director, CASC – OR WRRC Director, CASC – OR Director of Training, CASC – OR Past President, CASC – OR Business Manager, CASC – OR
CARS	<u>Board of Directors</u> President CARS President, AR President, RSQ President, RSO President, RW President, RPM	
RSO	<u>Executive RSO</u> President, RSO Secretary, RSO Treasurer, RSO Vice President (Performance Rally) Vice President (Road Rally)	

	Executive Powers	Advisory Powers
	<ul style="list-style-type: none"> • The power to make policy, rules and regulations. • The authority to arbitrate disputes. 	<ul style="list-style-type: none"> • The authority to advise.
Clubs	<u>Board of Directors MLRC</u> President, MLRC Vice President, MLRC Secretary, MLRC Treasurer, MLRC Director at Large, MLRC	<u>Executive Board</u> President, MLRC Vice President, MLRC Secretary, MLRC Treasurer, MLRC Director at Large, MLRC Membership Secretary, MLRC Regalia Coordinator, MLRC On Route Editor Coordinator of the Tall Pines RSO Coordinator <u>The Club</u> Club Members/Competitors